



themkt.com

m
kt

BLDG 1

anjouil's anjouil's

H
O
U
S
T
O
N

H
E
I
G
H
T
S

WE ARE SEEKING BEST IN CLASS

**RETAIL, RESTAURANT,
OFFICE & FITNESS**

USERS TO CULTIVATE A NEW COMMUNITY.

m•k•t is a collection of adapted industrial buildings in the heart of The Heights; one of Houston's most historic and dynamic neighborhoods.

Our local development team challenged the notion that successful mixed-use projects have to demolish the past. Our partnership is committed to contributing to the neighborhood through restrained scale and distinctive architecture.



4

ACRES OF GREEN SPACES

30

NEW MERCHANTS & RESTAURANTS

5

REIMAGINED BUILDINGS

200K+

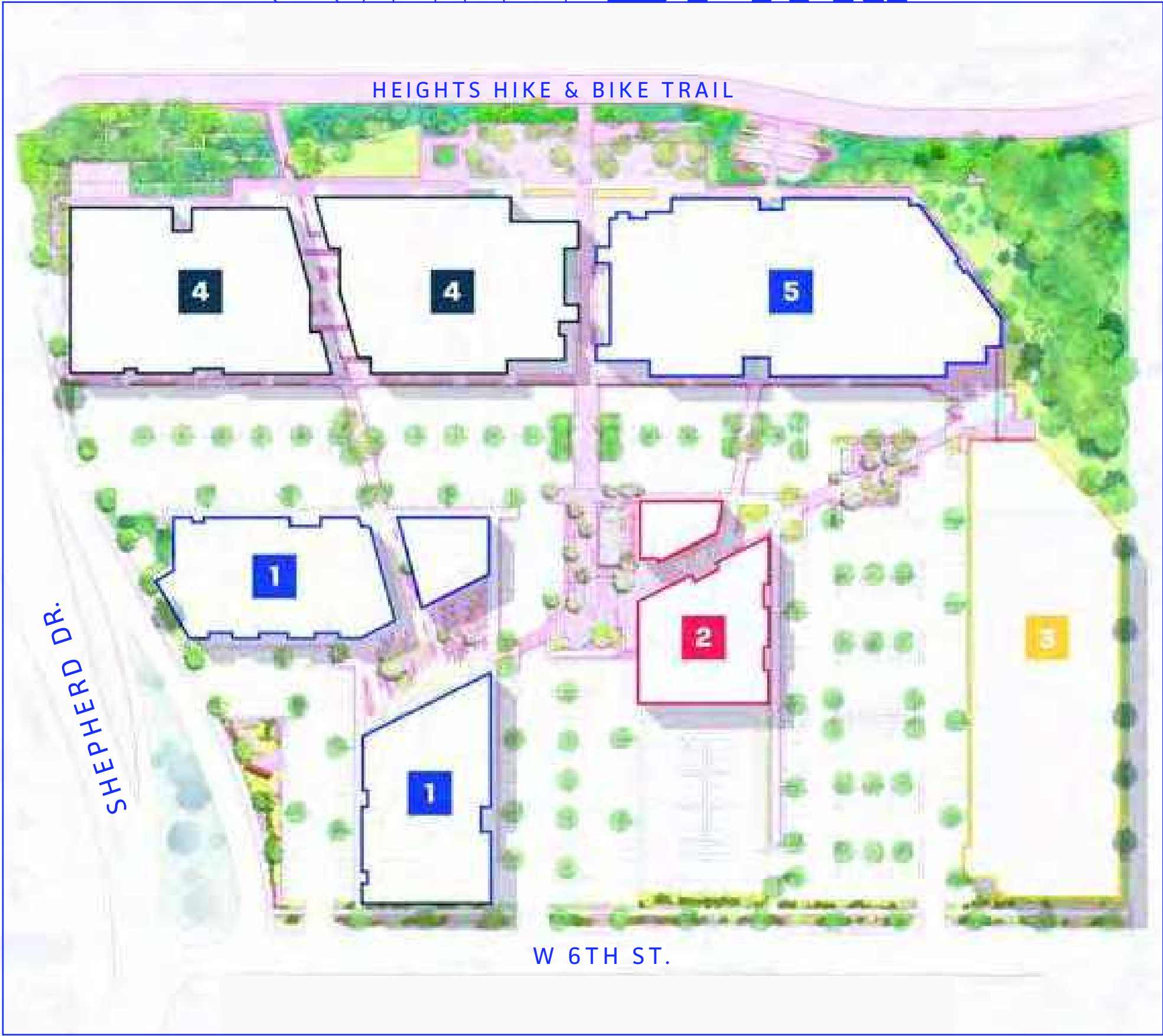
SQUARE FEET OF ADAPTED SPACE



BUILDING 5 : OFFICE ENTRANCE

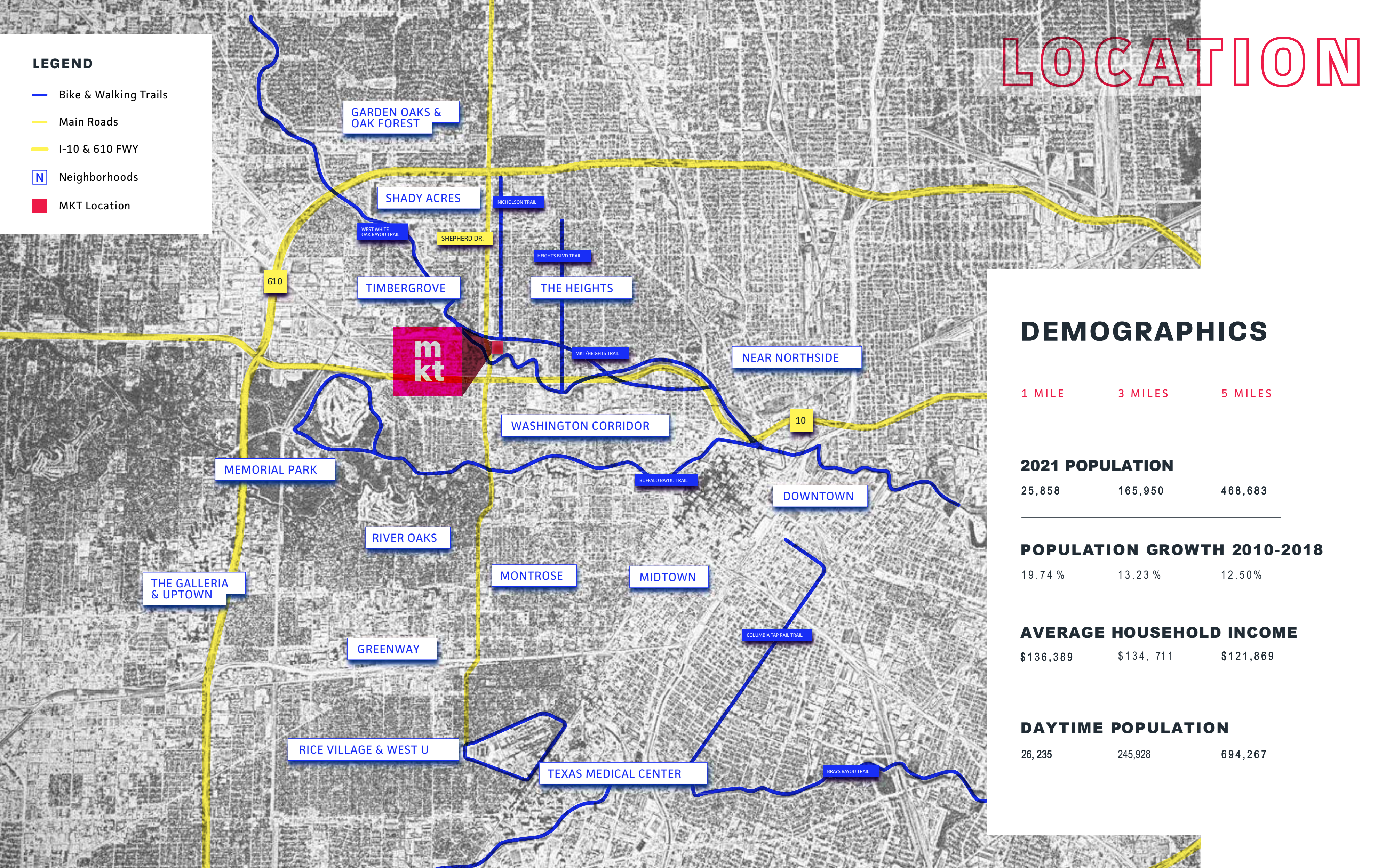
5 CREATIVELY-ADAPTED BUILDINGS

1	RETAIL, F&B, PERSONAL SERVICE 40,685 RSF	
2	RETAIL 2,780 RSF	OFFICE 12,310 RSF
3	OFFICE 44,025 RSF	
4	RETAIL, FITNESS, F&B 56,479 RSF	
5	RETAIL, F&B 14,750 RSF	OFFICE 30,650 RSF

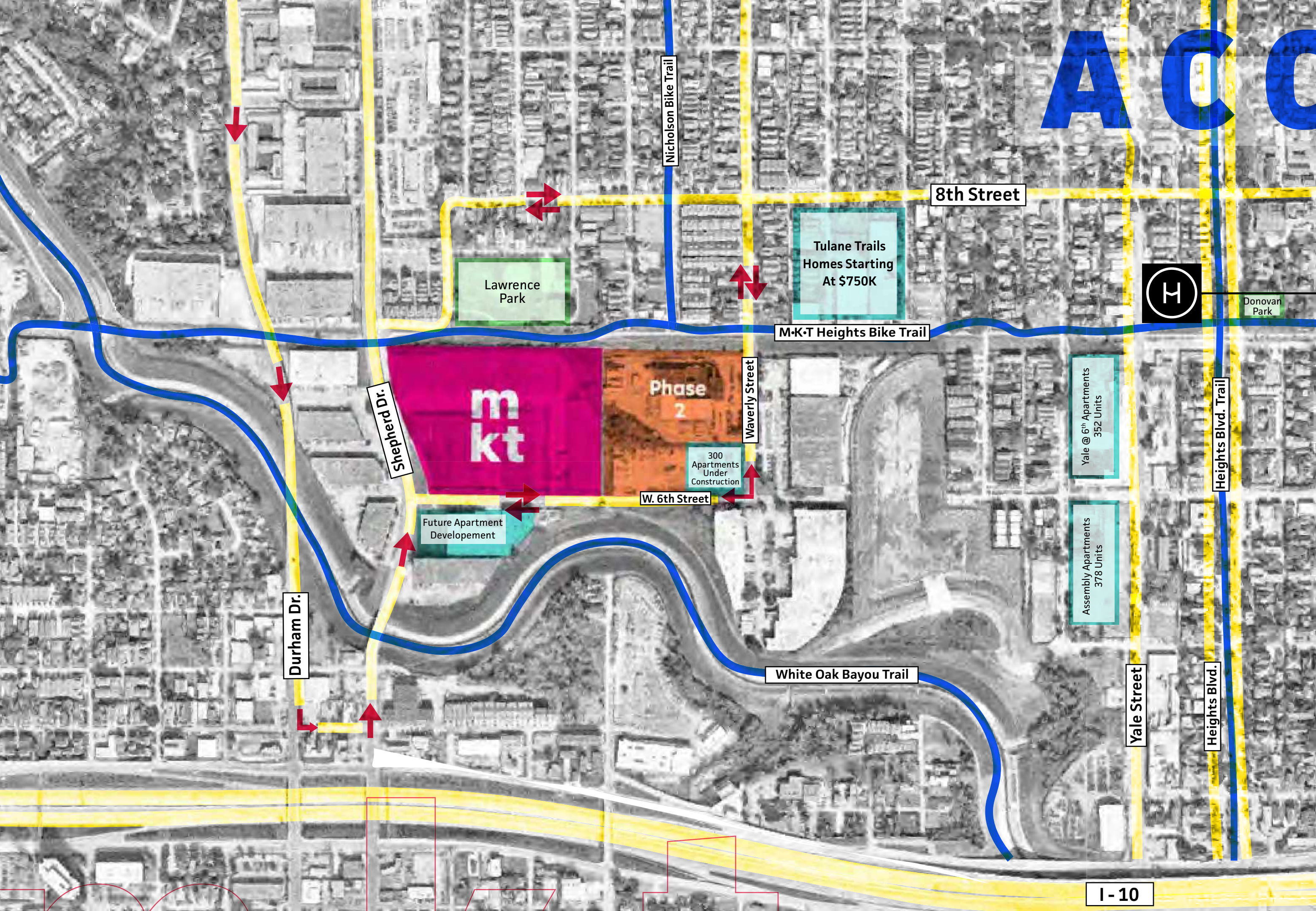


m•k•t is Houston Heights' largest trail-oriented, mixed-use project, designed by the acclaimed Michael Hsu Office of Architecture.





ACCESS

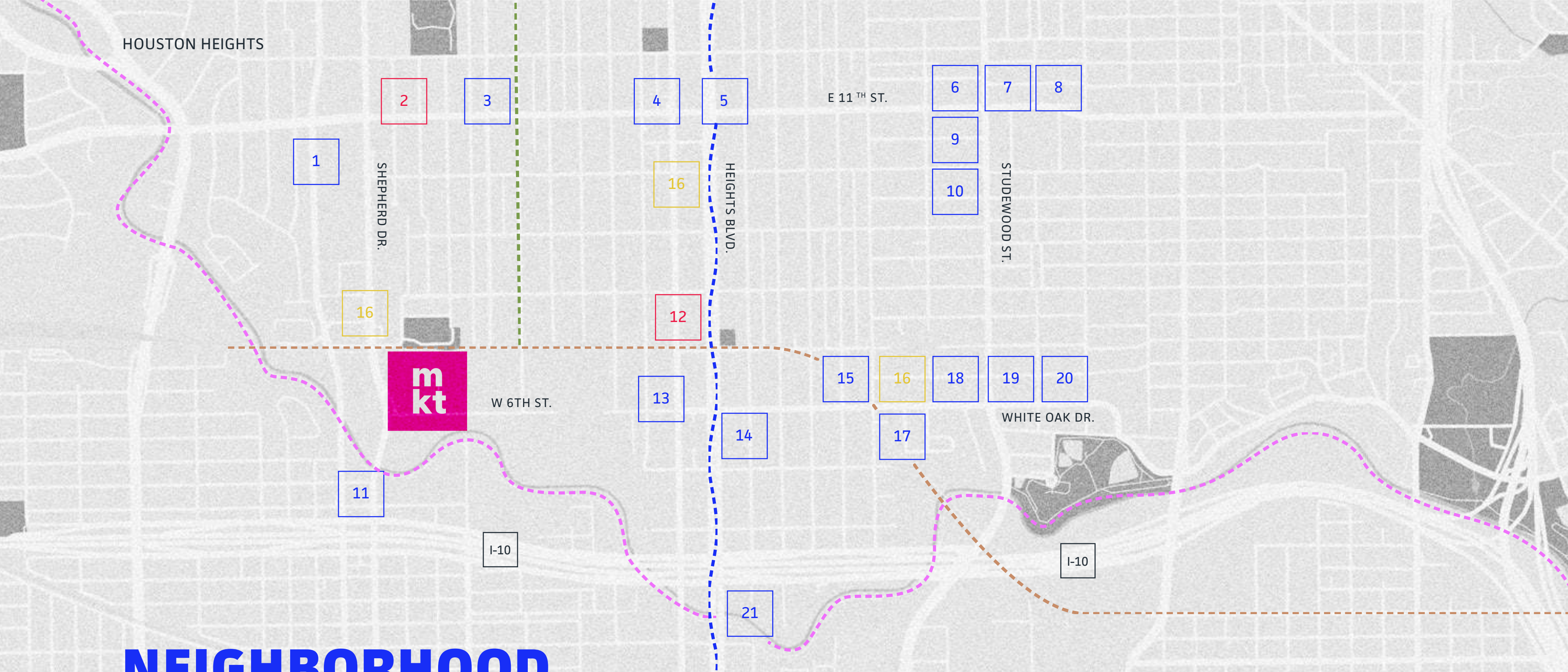


Heights Mercantile



Legend

- Bike & Walking Trails
- Main Roads
- I-10 & 610 FWY
- Parks
- Apartments
- MKT Location



NEIGHBORHOOD CO-TENANCY

■ Dining ■ Retail ■ Fitness

- West White Oak Bayou Trail
- MKT/Heights Trail
- Nicholson Bike Trail
- Heights Blvd Trail

- | | | | |
|----|-------------------------------------|----|------------------------------|
| 1 | Kroger | 12 | Lululemon |
| 2 | Blackbird Izakaya | 12 | Aesop |
| 3 | Presidio | 12 | Eye Society |
| 4 | Calle Onze | 12 | Paloma Beauty |
| 5 | Eight Row Flint | 13 | Lee's Fried Chicken & Donuts |
| 6 | Red Dessert Dive | 14 | Revival Market |
| 7 | Liberty Kitchen & Oyster Bar | 15 | Coltivare Pizza & Garden |
| 8 | A 2nd Cup | 16 | Black Swan Yoga |
| 9 | BCK: Kitchen & Cocktail Adventures | 16 | O Athletik |
| 10 | Good Dog Houston - Heights | 16 | Citizen Pilates |
| 11 | Nourish Juice Bar + Kalos Coffee Co | 17 | Golden Bagels & Coffee |
| 12 | Heights Mercantile | 18 | Tacos A Go Go |
| 12 | Will Leather Goods | 19 | Ritual |
| 12 | Warby Parker | 20 | The Ready Room |
| 12 | Rye 51 | 21 | Pokeworks |
| 12 | Marine Layer | | |

**1,000 LINEAR FEET
OF FRONTAGE ON THE HEIGHTS
MKT BIKE TRAIL**



THE TRAIL



A GATEWAY TO HOUSTON'S GREENBELT

m·k·t is named after the historic Missouri-Kansas-Texas (MKT) railroad line. This abandoned rail line was transformed into the vibrant MKT Heights Hike and Bike Trail that will form the project's 3-acre linear park.

m·k·t sits at the epicenter of Houston's award-winning trail system, linking 150-miles of greenways and trails. Ridership on the MKT Bike Trail has increased significantly and continues to grow as the trail network is further expanded.

AN URBAN BOARDWALK



6th Street

Building 3

Building 2

Building 1

Building 5

Building 4

M•K•T Heights Bike Trail



THE HEIGHTS



HOUSTON HAS TURNED ITS
ATTENTION BACK TO THE
WALKABLE NEIGHBORHOODS
IN THE INNER LOOP.

THE HEIGHTS HAS EMBODIED
THIS URBAN RENAISSANCE &
AN ABANDONED RAILROAD IS
NOW THE NEIGHBORHOOD'S
FAVORITE ARTERY.



THE NEIGHBORHOOD

The Heights is the unmistakable center of Houston's urban renaissance. It is five minutes west of Downtown Houston and ten minutes east of the Galleria. The Heights is home to three historic districts, a buzzing art scene and a strong sense of community. The Heights is within a ten minute drive for over 500,000 of the most innovative Houstonians.



UNIQUE RETAIL

The Heights is among the city's most desirable communities and has been enlivened by avant-garde chefs, artists and merchants.

Innovative brands such as Warby Parker, Lululemon, Marine Layer, Forth & Nomad, Aesop and Saint Lo already call this neighborhood home. mkt combines the area's affinity for thoughtful architecture and independent brands with unmatched walkability and green spaces.







HOUSTON'S **BEST CULINARY** MINDS

The city's best chefs have chosen The Heights to debut nationally-acclaimed experiences including Coltivare, Better Luck Tomorrow, Field & Tides and Melange Creperie.

m•k•t will feature 8 thoughtfully-selected food and beverage destinations including first-to-market national concepts paired with locally-inspired, chef-driven restaurants.





CULINARY CREATIVITY



**NOW
OPEN**

TEAM



MICHAEL HSU
OFFICE OF ARCHITECTURE

HSUOFFICE.COM



TRITEN REAL ESTATE PARTNERS

TRITENRE.COM



RADOM CAPITAL

RADOMCAPITAL.COM



LONG WHARF CAPITAL

LONGWHARF.COM

SHOP COS.

SHOP COMPANIES

SHOPCOMPANIES.COM

OPPORTUNITIES AVAILABLE

RETAIL

BRITTNEY AUSTIN

[214-242-5443](tel:214-242-5443)

BRITTNEY@SHOPCOMPANIES.COM

SHOP COMPANIES

CREATIVE OFFICE

RUSSELL HODGES

[713-425-5894](tel:713-425-5894)

RUSSELL.HODGES@AM.JLL.COM

JLL